



THE NETWORK IS THE COMPUTER™

Sun Microsystems, Inc.
2550 Garcia Avenue
Mountain View, CA 94043
415 960-1300
FAX 415 969-9131

For U.S. Sales Office locations, call:
800 821-4643
In California:
800 821-4642

Australia: (02) 413 2666
Belgium: 32 2 716 7911
Canada: 416 477-6745
Finland: 358-0-502 27 00
France: (1) 30 67 50 00
Germany: (0) 89-46 00 8-0
Hong Kong: 852 802 4188
Italy: 039 60551
Japan: (03) 221-7021
Korea: 822-563-8700
Latin America: 415 688-9464
The Netherlands: 033 501234
New Zealand: (04) 499 2344
Nordic Countries: +46 (0) 8 623 90 00
PRC: 861-831-5568
Singapore: 224 3388
Spain: (91) 5551648
Switzerland: (1) 825 71 11
Taiwan: 2-514-0567
UK: 0276 20444

Elsewhere in the world,
call Corporate Headquarters:
415 960-1300
Intercontinental Sales: 415 688-9000

GUI Options

There are also some options to configure the order of the rows of files or processes displayed. By default, they are sorted in reverse memory size order. The Options menu can be used to select the sort options dialog.

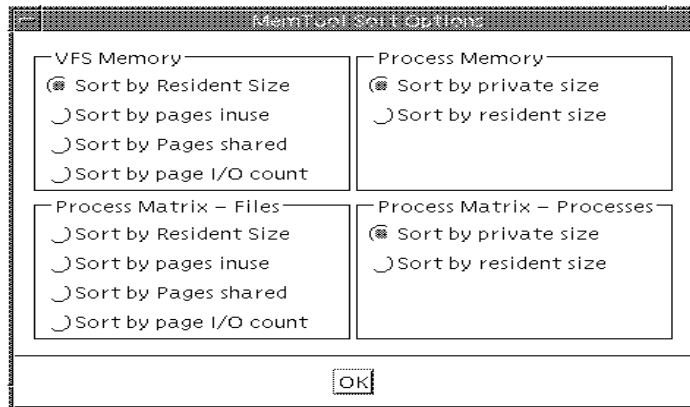


Figure 3-6 MemTool GUI - Sort Options

The matrix can be used to show the total memory usage of a group of processes. By default, the summary box at the top right hand corner shows the memory used by all of the processes displayed.

A group of processes can be selected with the left mouse button, and then summarised by hitting the *selection* button at the top-middle of the display. The full display can be returned by selecting the *all/filt* button.

Process Matrix

The process matrix shows the relationship between processes and mapped files. Across the top of the display is the list of processes that we viewed in the process memory display, and down the side is a list of the files which are mapped into these processes.

Each column of the matrix shows the amount of memory mapped into that process for each file, with an extra row for the private memory associated with that process.

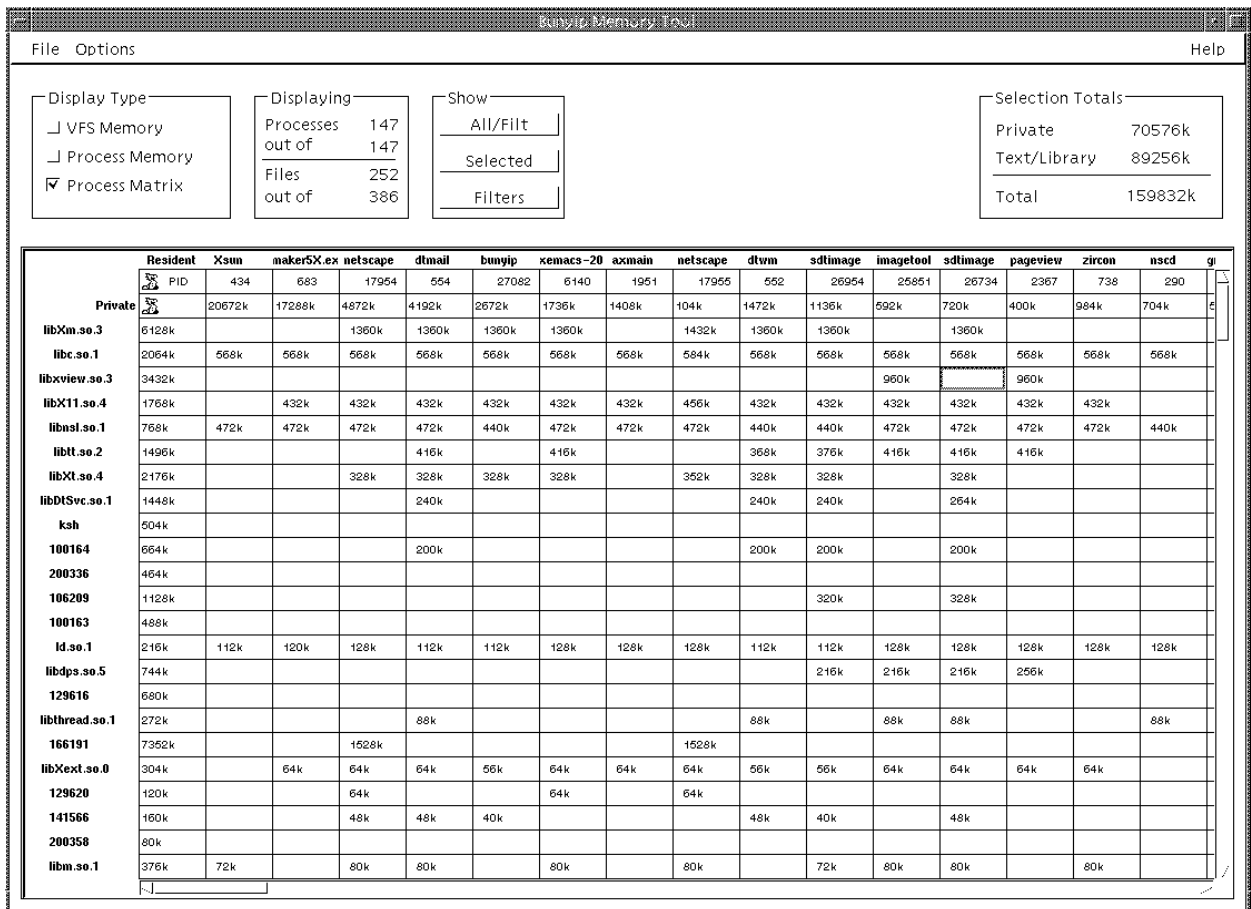


Figure 3-5 MemTool GUI - Process/File Matrix

The fields for the Process Memory display are as follows:-

Table 3-4 Process Memory Fields

Field	Description
PID	Process ID of process
Virtual	The virtual size of the process, including swapped out and unallocated memory
Resident	The amount of physical memory that this process has, including shared binaries, libraries etc
Shared	The amount of memory that this process is sharing with another process, ie shared libraries, shared memory etc.
Private	The amount of resident memory that this process has which is not shared with other processes. This figure is essentially Resident - Shared and does not include the application binaries.
Process	The full process name and arguments

The individual process map for a process can be selected by clicking on one of the process entries.

Process Memory

The second mode of the MemTool GUI is the process memory display. Click on the “Process Memory” checkbox at the left of the GUI to select this mode.

The process memory display shows the process table with a memory summary for each process. Each line of the process table is the same as the per-process summary from the *pmem* command.

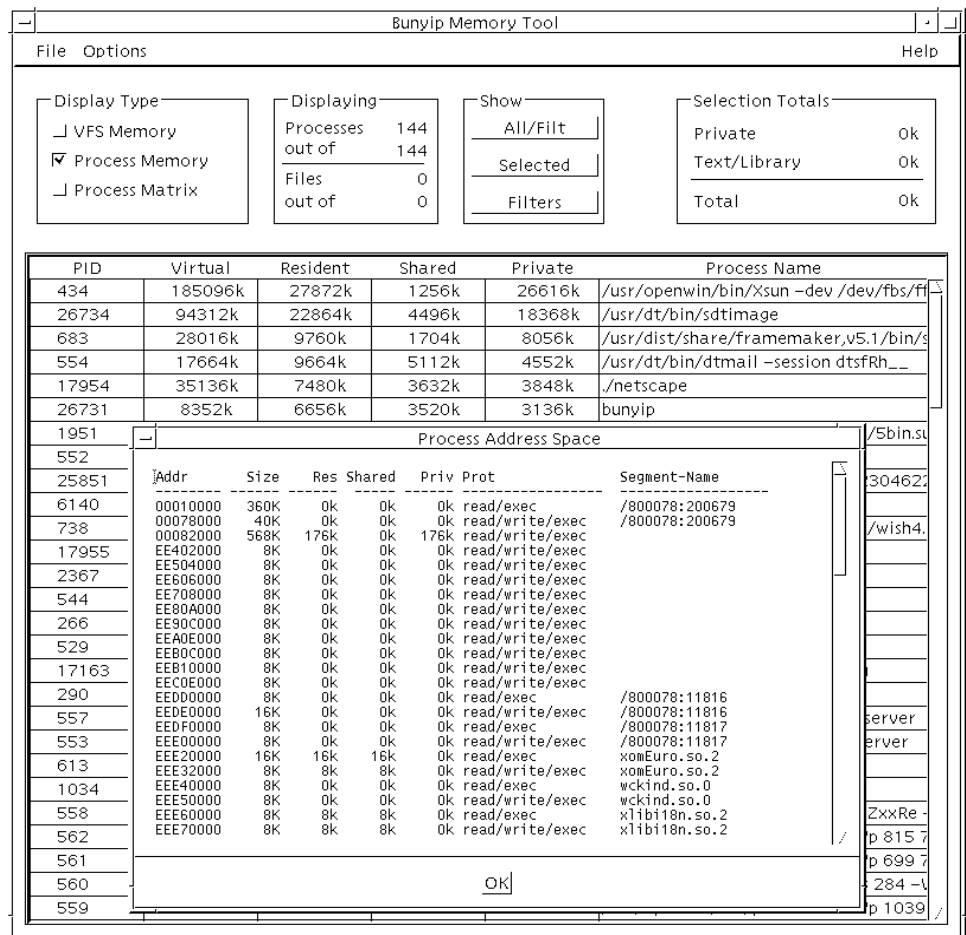


Figure 3-3 MemTool GUI - Process Memory

The screenshot shows the MemTool GUI with the following sections:

- Display Type:**
 - VFS Memory
 - Process Memory
 - Process Matrix
- Displaying:**
 - Processes: 0 out of 0
 - Files: 250 out of 445
- Show:**
 - All/Filter
 - Selected
 - Filters
- Selection Totals:**
 - Private: 0k
 - Text/Library: 0k
 - Total: 0k

The main table displays the following data:

Resident	Inuse	Shared	Pageins	Pageouts	File Name
11296k	11272k	0k	0	0	/2b40001:370743
4920k	4328k	0k	0	0	/15c0007:709619
4816k	4672k	0k	0	0	/export/home/webarchives/mail/netw
4320k	4272k	56k	0	0	/15c0008:166191
4264k	2576k	8k	0	0	/export/home/webarchives/mail/sun-r
3936k	3840k	1328k	0	0	/usr/dt/lib/libXm.so.3
3304k	3224k	0k	0	0	/800078:5970
3216k	3000k	0k	0	0	/export/home/webarchives/index/work
2928k	1840k	0k	0	0	/80007b:5701
2288k	1992k	0k	0	0	/15c0008:196636
2152k	2136k	0k	0	0	/2b40001:1204243
2088k	1312k	0k	0	0	/800078:35827
2056k	1808k	456k	0	0	/usr/openwin/lib/libxview.so.3
1992k	1280k	0k	0	0	/export/home/webarchives/mail/unigr
1840k	1040k	0k	0	0	/80007b:182313
1824k	1032k	0k	0	0	/800078:35831
1712k	1656k	0k	0	0	/800078:106190
1560k	1520k	432k	0	0	/usr/openwin/lib/libX11.so.4
1544k	1448k	0k	0	0	/800078:200260
1480k	1456k	0k	0	0	/2b40001:1206281
1368k	824k	0k	0	0	/800078:129575
1304k	1208k	560k	0	0	/usr/lib/libc.so.1
1272k	1256k	328k	0	0	/usr/openwin/lib/libXt.so.4
1240k	792k	0k	0	0	/export/local/bin/perl
1192k	1096k	352k	0	0	/usr/openwin/lib/libtt.so.2
1184k	1168k	0k	0	0	/2b40001:929861
1120k	1032k	0k	0	0	/800078:100213

Figure 3-2 MemTool GUI - Buffer Cache Memory


The GUI will only display the largest 250 files. A status panel at the top of the display shows the total amount of files and the number that have been displayed.

The Buffer Cache Memory display shows each entry in the UFS Buffer cache. The fields shown are as follows:-

Table 3-1 Buffer Cache Fields

Field	Description
Resident	The amount of physical memory that this file has associated with it.
Used	The amount of physical memory that this file has mapped into a process segment or SEGMAP. Generally the difference between this and the resident figure is what is on the free list associated with this file.
Shared	The amount of memory that this file has in memory that is shared with more than one process
Pageins	The amount of minor and major pagein's for this file
Pageouts	The amount of pageouts for this file
Filename	The filename of the VNODE or if not known the device and inode number in the format 0x0000123:456

The MemTool GUI

3 

The MemTool GUI interface provides an easy method of invoking most of the functionality of the kernel interfaces.

Invoke the GUI as the root user to see all of the process and file information.

```
# /opt/RMCMem/bin/memtool &
```

There are three basic modes on the MemTool GUI, Buffer cache memory, Process memory, and a Process/Buffer cache mapping matrix.

Buffer Cache Memory

The initial screen shows the contents of the Buffer Cache memory.

The list of VNODE's in the UFS buffer cache can be displayed with the memps command, and with the MemTool GUI.

```
# memps -m |more
SunOS devnull 5.6 SunOS_Development sun4u    07/21/97
11:27:03
  Size  Filename
12152k  /export/home/webarchives/mail/network-engrs
10680k  /export/home/webarchives/mail/sun-managers
 8032k  /2b40001: 370743
 6576k  /15c0007: 709619
 5152k  /export/home/webarchives/mail/unigram
 5056k  /export/home/webarchives/index/work/JAVAINTERNAL.dct
 3744k  /15c0008: 166191
 3288k  /usr/dt/lib/libXm.so.3
 2456k  /15c0007: 709592
 2376k  /export/home/webarchives/mail/firewall
 2272k  /15c0007: 586146
 2264k  /15c0008: 196636
 2016k  /800078: 5970
 1912k  /usr/openwin/lib/libxview.so.3
 1744k  /export/home/webarchives/mail/javaace
 1720k  /15c0007: 709594
 1696k  /15c0007: 132642
 1504k  /2b40001: 1206281
 1504k  /800078: 106190
 1496k  /2b40001: 1204243
 1448k  /15c0007: 709611
 1392k  /export/home/webarchives/index/work/JAVAINTERNAL.inv
 1264k  /usr/lib/libc.so.1
 1256k  /80007b: 182313
 1200k  /15c0007: 132666
 1096k  /800078: 100213
 1096k  /usr/openwin/lib/libX11.so.4
 1088k  /15c0007: 586141
 1080k  /usr/openwin/lib/libtt.so.2
 1072k  /15c0007: 709632
 1056k  /15c0007: 8844
 1032k  /2b40001: 929861
 1000k  /800078: 200260
  952k  /export/local/bin/perl
  880k  /usr/dt/lib/libDtSvc.so.1
  880k  /15c0007: 709610
  856k  /6167clac: 0
  856k  /usr/openwin/lib/libXt.so.4
  800k  /15c0008: 7231
  752k  /80007b: 113922
  720k  /800078: 82526
.
.
.
```

The example output from `pmem` shows the memory map of the `/bin/ksh` command. At the top of the output is the executable text and data segments. All of the executable binary is shared with other processes because it is mapped read only into each process. A small portion of the data segment is shared, whilst some is private because of copy-on-write operations (COW).

The next segment in the address space is the heap space, or user application data. This segment is typically 100% private to a process.

Following the heap space is the shared libraries. Each shared library has a text, and data segment, which are partially shared.

At the bottom of the process dump is the stack, which like the heap is 100% private.

A summary of the total Virtual size, resident portion and private memory are printed at the bottom.

Buffer cache memory

Traditionally there has been no method of showing where the pool of buffer cache memory has been allocated. MemTool makes this possible by providing a list of all of the VNODE's in the buffer cache.

The list summarises the size of each VNODE in the buffer cache, and where possible the real filename. If the real filename cannot be determined, then the device and inode number are printed for that VNODE.

The MemTool kernel module collects filenames as each file is opened or referenced. If the kernel module has recently been loaded, then not all of the filenames will be available. The best way to cure this is to use the `/etc/rc2.d` script to load the `bunyip` module at boot, which will capture the first 8192 filenames referenced.

If you have a system with many files, you might like to put the following statement into `/etc/system`. Note that this uses extra kernel memory.

```
set bunyipmod:vfssize_maxitems = 32768
```

The RSS figure is a measure of the amount of physical memory mapped into a process, but often there is more than one copy of the process running, and a large proportion of a process is shared with another.

The MemTool tools provide a mechanism for getting a detailed look at a processes memory utilisation. MemTool can show how much memory is in-core, how much of that is shared, and hence how much private memory a process has.

The *pmem* command (or */usr/proc/bin/pmap -x* in Solaris 2.6) can be used to show the memory utilisation of a single process.

```
# pmem 25888
or
# /usr/proc/bin/pmap -x 25888

25888: ksh

Addr          Size      Res Shared   Priv Prot          Segment-Name
-----
00010000    184K    184k    184k     0k read/exec      /bin/ksh
0004C000      8K      8k      8k     0k read/write/exec /bin/ksh
0004E000     40K     40k     0k    40k read/write/exec [ heap ]
EF5E0000     16K     16k     8k     8k read/exec      /usr/lib/locale/en_AU.so.1
EF5F2000      8K      8k     0k     8k read/write/exec /usr/lib/locale/en_AU.so.1
EF600000    592K    568k    560k     8k read/exec      /usr/lib/libc.so.1
EF6A2000     24K     24k     8k    16k read/write/exec /usr/lib/libc.so.1
EF6A8000      8K      8k     0k     8k read/write/exec
EF6B0000      8K      0k     0k     0k read/write/exec
EF6C0000     16K     16k    16k     0k read/exec      /usr/lib/libc_psr.so.1
EF6D0000     16K     16k    16k     0k read/exec      /usr/lib/libmp.so.2
EF6E2000      8K      8k     8k     0k read/write/exec /usr/lib/libmp.so.2
EF700000    448K    400k    400k     0k read/exec      /usr/lib/libnsl.so.1
EF77E000     32K     32k     8k    24k read/write/exec /usr/lib/libnsl.so.1
EF786000     24K     8k     0k     8k read/write/exec
EF790000     32K     32k    32k     0k read/exec      /usr/lib/libsocket.so.1
EF7A6000      8K      8k     8k     0k read/write/exec /usr/lib/libsocket.so.1
EF7A8000      8K      0k     0k     0k read/write/exec
EF7B0000      8K      8k     8k     0k read/exec/shared /usr/lib/libdl.so.1
EF7C0000    112K    112k    112k     0k read/exec      /usr/lib/ld.so.1
EF7EA000     16K     16k     8k     8k read/write/exec /usr/lib/ld.so.1
EFFF0000     16K     16k     0k    16k read/write/exec
EFFF0000     16K
-----
                1632K    1528k    1384k    144k
```

MemTool Overview



The basis for the operation of MemTool is a loadable kernel module which uses the /proc interface to look at the memory allocation of processes and the UFS buffer cache.

Obtaining a summary of the systems memory

A summary of the systems memory can be reported with the prtmem command.

```
# prtmem
Total Physical Memory: 384 Megabytes
Buffer Cache Memory: 112 Megabytes
Kernel Memory: 63 Megabytes
Free Memory: 17 Megabytes
```

Process memory usage and the pmem command

Traditionally, the only information about process memory utilisation was the virtual memory size and RSS figure available from the *ps* command and *top*.

The virtual address size of a process often bears no resemblance to the amount of memory a process is using because it contains all of the unallocated memory, libraries, shared memory and sometimes hardware devices (in the case of Xsun).

Manually Loading the kernel Module

If you answered no to loading the kernel loadable module, or have rebooted and the module was not loaded at boot then you will need to manually load the module.

There is a script to do this in the Memtool base directory, /opt/RMCmem/drv.

```
# cd /opt/RMCmem/drv
# ./bunyipload
# modinfo |grep bunyip
110 6167c000 5162 - 1 bunyipmod.56 (VFS and Proc Memory Stats Module)
```

The Memtool package uses a loadable kernel module. If you would like this module loaded now so that you may use the tools before reboot, then answer yes to this question. To just install the software without impacting the system, answer no.

Please be aware that loading modules onto a running system should be done without production users on the system.

```
Do you want to install the module loader in /etc/rc2.d? y
```

The loadable kernel module can optionally be loaded at boot time. This is the normal method of installing Memtool. Answer yes to have a script placed in /etc/rc2.d to load the module at boot. If you don't want the module to be loaded at reboot you can answer no.

```
.Do you want the kernel module loaded now? y

Do you want to install the module loader in /etc/rc2.d? y

Using </opt> as the package base directory.
## Processing package information.
## Processing system information.
## Verifying disk space requirements.
## Checking for conflicts with packages already installed.
## Checking for setuid/setgid programs.

This package contains scripts which will be executed with super-user
permission during the process of installing this package.

Do you want to continue with the installation of <RMCmem> [y,n,?] y

Installing The MemTool Package as <RMCmem>

## Executing preinstall script.
## Installing part 1 of 1.
/etc/init.d/memtool
/opt/RMCmem/README
.
## Executing postinstall script.

Installation of <RMCmem> was successful.
```

Installation

1 

The Memtool package may be obtained from your local Sun SE, and is at the time of writing available for Solaris 2.5, 2.5.1 and Solaris 2.6.

Installation requires loading a kernel module, and it is recommended that you exercise care when installing, as not to disrupt production workloads.

Adding the Memtool Package

The package is provided in compress tar format, and uses the standard Solaris pkgadd command.

```
# zcat RMCmem3.5b.tar.Z |tar xvf -
x RMCmem, 0 bytes, 0 tape blocks
x RMCnen/pkgmap, 2343 bytes, 5 tape blocks
.
.
# pkgadd -d .

The following packages are available:
 1 RMCmem      The MemTool Package
                   (sparc) 3.5b

Select package(s) you wish to process (or 'all' to process
all packages). (default: all) [?,??,q]: 1

Do you want the Memtool module loaded now? y
```


Contents

1. Installation	4
Adding the Memtool Package	4
Manually Loading the kernel Module	6
2. MemTool Overview	8
Obtaining a summary of the systems memory	8
Process memory usage and the pmem command	8
Buffer cache memory	10
3. The MemTool GUI	14
Buffer Cache Memory	14
Process Memory	17
Process Matrix	19
GUI Options	21

Copyright 1997 Sun Microsystems, Inc. 2550 Garcia Avenue, Mountain View, California 94043-1100 U.S.A. All rights reserved.

This product or document is protected by copyright and distributed under licenses restricting its use, copying, distribution, and decompilation. No part of this product or document may be reproduced in any form by any means without prior written authorization of Sun and its licensors, if any. Third-party software, including font technology, is copyrighted and licensed from Sun suppliers.

Parts of the product may be derived from Berkeley BSD systems, licensed from the University of California. UNIX is a registered trademark in the U.S. and other countries, exclusively licensed through X/Open Company, Ltd.

Sun, Sun Microsystems, the Sun logo, SunSoft, SunDocs, SunExpress, and Solaris [\[ATtribution of All Other Sun Trademarks Mentioned Significantly Throughout Product or Documentation. Do Not Leave This Text in Your Document!\]](#) are trademarks, registered trademarks, or service marks of Sun Microsystems, Inc. in the U.S. and other countries. All SPARC trademarks are used under license and are trademarks or registered trademarks of SPARC International, Inc. in the U.S. and other countries. Products bearing SPARC trademarks are based upon an architecture developed by Sun Microsystems, Inc. [\[Third-Party Trademarks That Require Attribution Appear in 'TMARK.' If You Believe a Third-Party Mark Not Appearing in 'TMARK' Should Be Attributed. Consult Your Editor or the Sun Trademark Group for Guidance.\]](#)

The OPEN LOOK and Sun™ Graphical User Interface was developed by Sun Microsystems, Inc. for its users and licensees. Sun acknowledges the pioneering efforts of Xerox in researching and developing the concept of visual or graphical user interfaces for the computer industry. Sun holds a non-exclusive license from Xerox to the Xerox Graphical User Interface, which license also covers Sun's licensees who implement OPEN LOOK GUIs and otherwise comply with Sun's written license agreements.

RESTRICTED RIGHTS: Use, duplication, or disclosure by the U.S. Government is subject to restrictions of FAR 52.227-14(g)(2)(6/87) and FAR 52.227-19(6/87), or DFAR 252.227-7015(b)(6/95) and DFAR 227.7202-3(a).

DOCUMENTATION IS PROVIDED "AS IS" AND ALL EXPRESS OR IMPLIED CONDITIONS, REPRESENTATIONS AND WARRANTIES, INCLUDING ANY IMPLIED WARRANTY OF MERCHANTABILITY, FITNESS FOR A PARTICULAR PURPOSE OR NON-INFRINGEMENT, ARE DISCLAIMED, EXCEPT TO THE EXTENT THAT SUCH DISCLAIMERS ARE HELD TO BE LEGALLY INVALID.

Copyright 1997 Sun Microsystems, Inc., 2550 Garcia Avenue, Mountain View, California 94043-1100 Etats-Unis. Tous droits réservés.

Ce produit ou document est protégé par un copyright et distribué avec des licences qui en restreignent l'utilisation, la copie, la distribution, et la décompilation. Aucune partie de ce produit ou document ne peut être reproduite sous aucune forme, par quelque moyen que ce soit, sans l'autorisation préalable et écrite de Sun et de ses bailleurs de licence, s'il y en a. Le logiciel détenu par des tiers, et qui comprend la technologie relative aux polices de caractères, est protégé par un copyright et licencié par des fournisseurs de Sun.

Des parties de ce produit pourront être dérivées des systèmes Berkeley BSD licenciés par l'Université de Californie. UNIX est une marque déposée aux Etats-Unis et dans d'autres pays et licenciée exclusivement par X/Open Company, Ltd.

Sun, Sun Microsystems, le logo Sun, SunSoft, SunDocs, SunExpress, et Solaris [\[ATtribution of All Other Sun Trademarks Mentioned Significantly Throughout Product or Documentation. Do Not Leave This Text in Your Document!\]](#) sont des marques de fabrique ou des marques déposées, ou marques de service, de Sun Microsystems, Inc. aux Etats-Unis et dans d'autres pays. Toutes les marques SPARC sont utilisées sous licence et sont des marques de fabrique ou des marques déposées de SPARC International, Inc. aux Etats-Unis et dans d'autres pays. Les produits portant les marques SPARC sont basés sur une architecture développée par Sun Microsystems, Inc. [\[Third-Party Trademarks That Require Attribution Appear in 'TMARK.' If You Believe a Third-Party Mark Not Appearing in 'TMARK' Should Be Attributed. Consult Your Editor or the Sun Trademark Group for Guidance.\]](#)

L'interface d'utilisation graphique OPEN LOOK et Sun™ a été développée par Sun Microsystems, Inc. pour ses utilisateurs et licenciés. Sun reconnaît les efforts de pionniers de Xerox pour la recherche et le développement du concept des interfaces d'utilisation visuelle ou graphique pour l'industrie de l'informatique. Sun détient une licence non exclusive de Xerox sur l'interface d'utilisation graphique Xerox, cette licence couvrant également les licenciés de Sun qui mettent en place l'interface d'utilisation graphique OPEN LOOK et qui en outre se conforment aux licences écrites de Sun.

CETTE PUBLICATION EST FOURNIE "EN L'ETAT" ET AUCUNE GARANTIE, EXPRESSE OU IMPLICITE, N'EST ACCORDEE, Y COMPRIS DES GARANTIES CONCERNANT LA VALEUR MARCHANDE, L'APTITUDE DE LA PUBLICATION A REpondre A UNE UTILISATION PARTICULIERE, OU LE FAIT QU'ELLE NE SOIT PAS CONTREFAISANTE DE PRODUIT DE TIERS. CE DENI DE GARANTIE NE S'APPLIQUERAIT PAS, DANS LA MESURE OU IL SERAIT TENU JURIDIQUEMENT NUL ET NON AVENU.



Please
Recycle



Adobe PostScript

MemTool

Installation and Operation

Alpha Draft



THE NETWORK IS THE COMPUTER™

Sun Microsystems Computer Company

A Sun Microsystems, Inc. Business
2550 Garcia Avenue
Mountain View, CA 94043 USA
415 960-1300 fax 415 969-9131

Part No.: 8xx-xxxx-xx
Revision X, July 1997